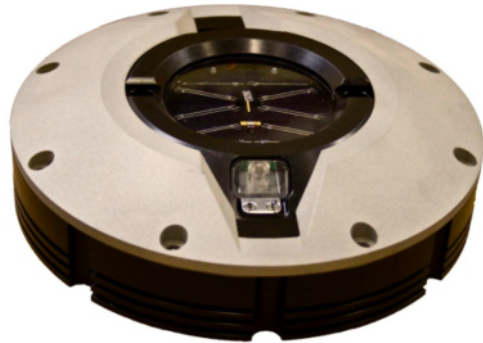


IronStar

Harsh winter environments where snow ploughs are used to keep the roads clear can easily damage an unprotected in-roadway light.

IronStar™ is a snowplow friendly in-pavement mounting designed to protect the wirelessly controlled, solar powered LumiStar **XB**™ In-Roadway Light in snow country.

The base socket allows IronStar™ to be installed flush with the surface of the road. The stainless steel fixture is hardened to Rc 60 to withstand direct impact of the snowplow blade. The protective steel shield can be easily replaced if necessary.



IronStar™ Base Plate & LumiStar **XB**™.

TECHNICAL SPECIFICATIONS

LIGHTING FIXTURE

Outside Diameter	8.80 inches
Visibility Range	Mid-Day, Bright Sunlight Minimum 2000 ft
Lighting Fixture Type	Lumi Star XB – Bidirectional & Unidirectional

INSTALLATION

Core Diameter	9.00 inches
Fastening Methods	Anchoring Epoxy Quickset Concrete
Height Above Pavement	Flush Mounted Fully Adjustable